

Appendix P. Stormwater Management and Contributing Impervious Area Summary

This page is intentionally left blank.

K19071 - ISRQ: 20% Design Package

Stormwater Management Summary Table

Area Description	Treated Area (acres)			Concept Stormwater Management Plan
	CIA	Offsite	Total	
ODOT CIA = 22.31 acres				
ODOT Area 1 (North)	0.00	16.84	16.84	Stormwater runoff from the North basin will be treated in biofiltration swales designed to meet the requirements of the ODOT Hydraulics Manual.
ODOT Area 2 (Central)	1.66	3.40	5.06	Stormwater runoff from the Central basin will be treated in a biofiltration swale designed to meet the requirements of the ODOT Hydraulics Manual.
ODOT Area 3 (South)	10.46	1.12	11.58	Stormwater runoff from the South basin will be treated in proprietary treatment facilities that meet the Washington Department of Ecology's General Use Level Designation Emerging Stormwater Treatment Technologies Evaluation Program Technology Assessment Protocol - Ecology (TAPE) program.
Total	12.12	21.36	33.48	
City of Portland CIA = 18.40 acres				
Combined Sewer Overflow	16.88	0.00	16.88	Stormwater runoff will be infiltrated to the maximum extent feasible, per City of Portland requirements, via stormwater planters located in the pedestrian furnishing zone and adjacent to the roadway.
Storm-only	1.52	0.00	1.52	Stormwater runoff will be treated in stormwater planters located in the pedestrian furnishing zone and adjacent to the roadway.
Total	18.40	0.00	18.40	

I-5 ROSE QUARTER
IMPROVEMENT PROJECT
STORMWATER ROLL PLOT
(LOCAL STREETS)
PACIFIC HIGHWAY
MULTI-NOMAH COUNTY
20% DESIGN
PACKAGE
12/4/2020



LEGEND

- Treated Impervious Area
- Contributing Impervious Area



ODOT Area 1 - 16.84 acres
Water Quality

ODOT Area 2 - 3.06 acres
Water Quality

ODOT Area 3 - 1.88 acres
Water Quality

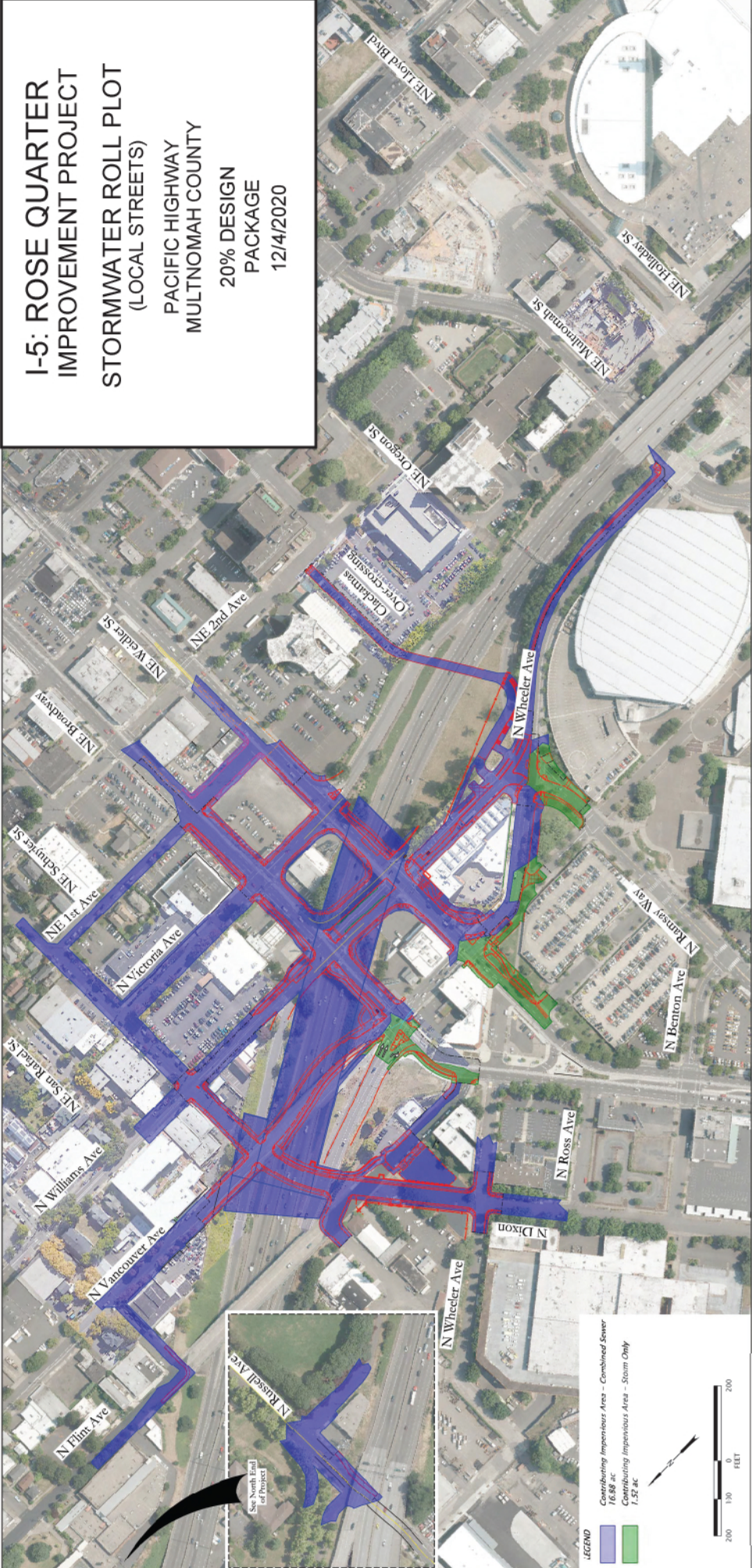
ODOT Contributing Impervious
Area 22.31 acres

**I-5: ROSE QUARTER
IMPROVEMENT PROJECT**

**STORMWATER ROLL PLOT
(LOCAL STREETS)**

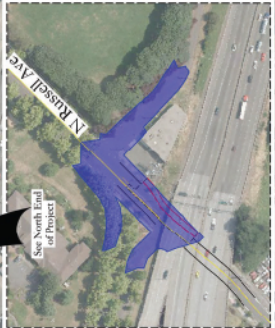
PACIFIC HIGHWAY
MULTNOMAH COUNTY

20% DESIGN
PACKAGE
12/4/2020



LEGEND

- Contributing Impervious Area - Combined Sewer
16.88 AC
- Contributing Impervious Area - Storm Only
1.53 AC



This page is intentionally left blank.